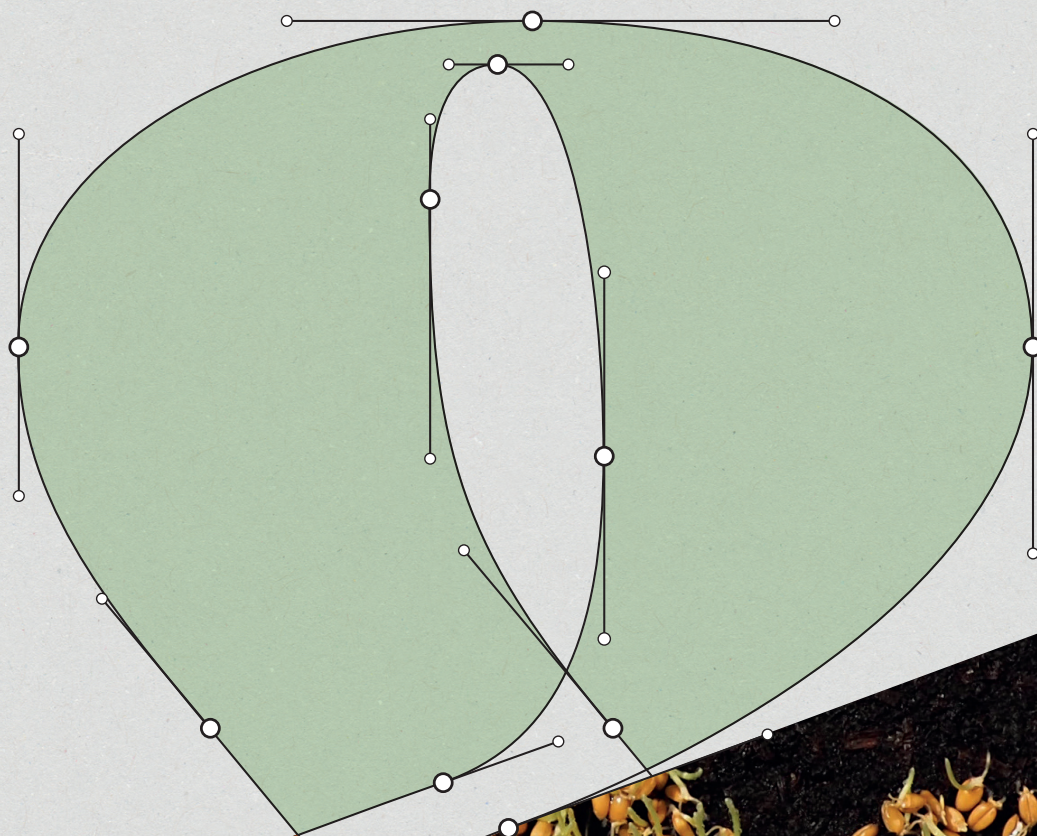


**alphabet,** *fonts*



# DOCUMENTATION

TYPE DESIGN | FONTS | CHARACTER SETS | OPEN TYPE FEATURES  
VARIABLE & MULTILAYER FONTS | FONT INSTALLATION

DOCUMENTATION  
DOCUMENTATION  
**DOCUMENTATION**  
DOCUMENTATION  
DOCUMENTATION

CONTENT

PAGE

---

01	<b>alphabeet, Font Designs</b>	3
02	<b>Open Type Features (Info)</b>	4-5
03	<b>Multilayer Fonts (Info)</b>	6
04	<b>Variable Fonts (Info)</b>	7
05	<b>Character Sets (Glyphs)</b>	8-9
06	<b>Font Installation (Info)</b>	
	Desktop Font Installation	10
	Web Font Installation & embedding	11

---

Berto

---

Berto No. 1  
 Berto No. 2  
 Berto No. 3  
 Berto No. 4  
**Berto No. 5**  
 Berto Variable Font

Dueblo

---

Dueblo Serif Regular  
*Dueblo Serif Italic*  
 Dueblo Serif Medium  
**Dueblo Serif Bold**

Dueblo Sans Regular  
*Dueblo Sans Italic*  
 Dueblo Sans Medium  
**Dueblo Sans Bold**  
**Dueblo Sans Decor S**  
**Dueblo Sans Decor L**

D Semi Serif Regular  
 D Semi Serif Medium  
**D Semi Serif Bold**  
 Dueblo variable Font

*Joline*

---

*Joline norm*  
*wide*  
 Variable Font

Graigway

---

Graigway Sans  
 Graigway Line  
 Graigway Layer Fonts  
**Graigway Serif**

Hagenbeck

---

**Hagenbeck Bold**  
**Hagenbeck Stamp**

Karacho

---

**Karacho Fat**  
**Karacho Punzo**  
**Karacho Layer Fonts**

Ratatam

---

Ratatam Thin  
 Ratatam Extralight  
 Ratatam Light  
 Ratatam Regular  
 Ratatam Medium  
**Ratatam Bold**  
**Ratatam Extrabold**  
**Ratatam Black**  
**Ratatam Inline**  
 Ratatam Variable Font

Slabton

---

Slabton Thin  
*Slabton Thin Italic*  
 Slabton Light  
*Slabton Light Italic*  
 Slabton Roman  
*Slabton Roman Italic*  
**Slabton Medium**  
**Slabton Medium Italic**  
**Slabton Bold**  
**Slabton Bold Italic**  
**Slabton Black**  
**Slabton Black Italic**  
**SLABTON DECOR CAPS**  
 Slabton Variable Font

Nømad

---

Nømad M 50 Light  
 Nømad M 100 Regular  
**Nømad M 150 Medium**  
**Nømad M 200 Bold**  
 Nømad XXS 50 Light  
 Nømad XXS 100 Regular  
**Nømad XXS 150 Medium**  
**Nømad XXS 200 Bold**  
 Nømad XS 50 Light  
 Nømad XS 100 Regular  
**Nømad XS 150 Medium**  
**Nømad XS 200 Bold**  
 Nømad S 50 Light  
 Nømad S 100 Regular  
**Nømad S 150 Medium**  
**Nømad S 200 Bold**  
 Nømad L 50  
 Nømad L 100  
**Nømad L 150**  
**Nømad L 200**  
 Nømad XL 50  
 Nømad XL 100  
**Nømad XL 150**  
**Nømad XL 200**  
 Nømad Variable Font

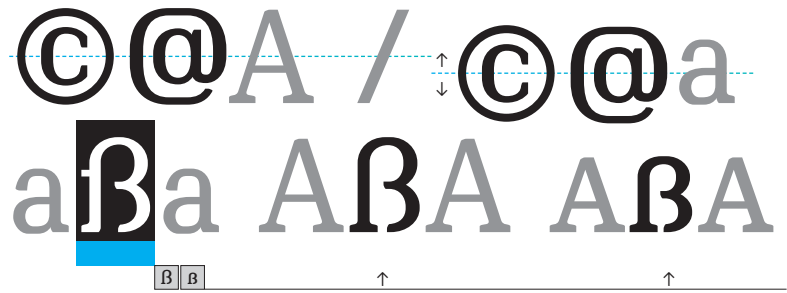
Nømad RND 50 Light  
 Nømad RND 100 Regular  
**Nømad RND 150 Medium**  
**Nømad RND 200 Bold**  
 Nømad DCR Double  
 Nømad DCR Stencil  
 Nømad DCR Outline  
 Nømad DCR SCETCH  
**Nømad DCR Inline**  
**Nømad DCR Rough**

---

SYM ICON COLLECTIONS

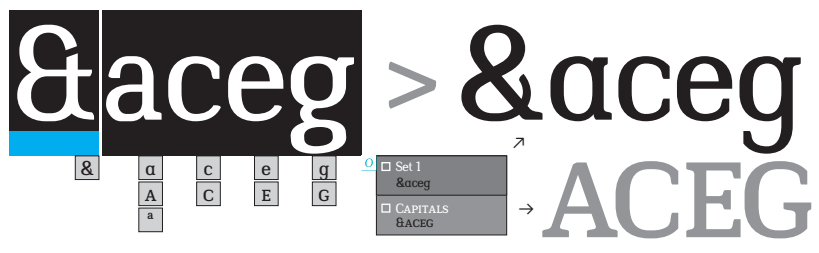
# Open Type Features

There are a lot of open type features in fonts, which bring loads of possibilities while using them. Next to automated contextual and positional features, there are ones you have to choose and use, if you want. Always have a look in the open type menus or the glyph table of your design application. By marking single characters in modern software you get the options, if there are any. We hope, you enjoy the work with our fonts and features. If you have questions for individualization, please get in contact.



## CONTEXTUAL ALTERNATES

Automated glyph and position changes, which the font designer prepared for you, happen in context to the letters and signs next to it. These features are running automatically. You can manually deactivate them or change glyphs back and choose the each other glyph over the open type menus.



## OPTIONAL STYLISTIC ALTERNATES

Stylistic alternates are formal variants of characters. You are able to choose these alternates, if available, over the automatically viewed open type menus in your software (see visualization) or activate them on other places.



## STYLISTIC SETS

Stylistic sets are collections of the glyph alternates. You have to select them over the open type menus in your design applications. (open type > format sets > Set 1 / 2 etc.)



## COMBINING ACCENTS

These accents fitting to glyphs automatically.

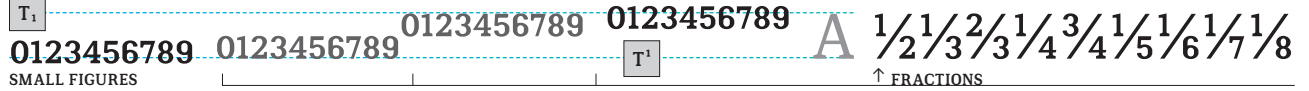


## NUMBERS / FIGURE ALTERNATES

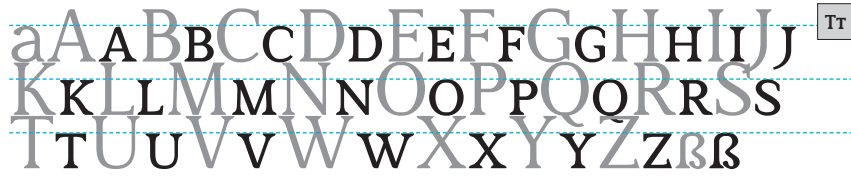
There are different styles and forms of numbers required and within a font. The "normal" numbers are the proportional / majuscule numbers, further there are the old style numbers for optional use within lowercase settings, small cap numbers for the use within capital settings and tabular figures for the use in tables. Then there are the superior and inferior numbers and the numbers for fractions as well as the fractions themselves.



As in other features numbers also change automatically to corresponding settings and you can choose them manually.



# Open Type Features



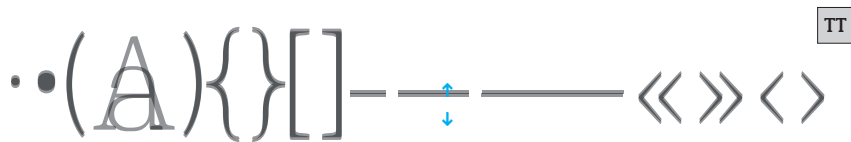
## SMALL CAPS

Small caps are uppercase letters on the height and with the stroke thickness of lowercase letters. This is technically not just a case-transformation. The feature allows to access these glyphs when the font is set to capitals.



## VERSAL SPACING

With this feature letters automatically get optimized spacing when set to uppercase. Please use this function instead of typing in uppercase.



## CASE-FEATURE

There are case sensitive forms & positions. Means, that glyphs like the parens, braces, brackets, the bullet and more are higher when the font is set to uppercase.



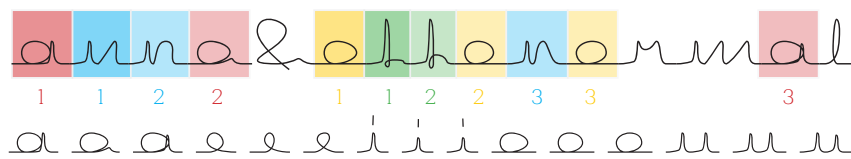
## ALTERNATE GLYPH BREAKS

There are exceptions in design in different font weights. The breaks for instance are automatically switching in variable fonts.



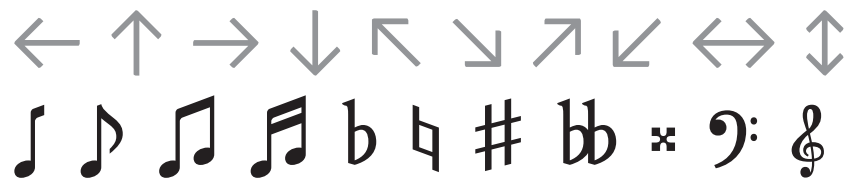
## POSITIONAL FORMS: INITIALS

Initial forms are special characters for the beginning of words or rows. Activate these forms in the open type menu of your software.



## CONTEXTUAL ALTERNATE ROTATING

With the glyph rotating for example three sets of letter variants are rotating, if coming nearby the same glyph. This is an automated feature to script fonts like the f-line.

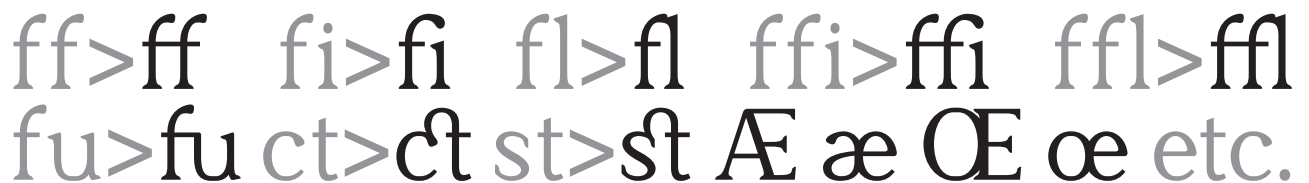


## SPECIAL CHARACTERS

There may be special characters in fonts, such as music signs, arrows and others. Always have a look in the glyphs-table and see, what the font designer prepared for you.

## LIGATURES

A ligature is two or more glyphs or letters joined as a single glyph. In font softwares there are optional as well as automated ligatures. However they are integrated in the font software, if they are available, you can choose the ligatures in the menus of your applications, such as a glyphs-table.



# Multilayer Fonts



Layered fonts have letters that are stacked in multiple layers of different shades or colors. Some layered fonts actually include multiple files for each layer to build individual font variants or font combinations. What you need to do in your design software, is to have multiple text frames with the exact same content exactly on top of each other or intentionally displaced, each of them with a different font style and/or color.



# Variable Fonts

Some of the fonts are ready for variable purposes. To use the variable fonts you may have to copy the font files into corresponding folders in your system, to enable applications to use it. There are different options. Slabton is variable in weight and italic angle, Dueblo has variable serifs, weight and a switch to semi serif, Berto and Ratatam are variable in weight, Nømad is variable in weight and width and f-line in width also.



**Slabton** AA WEIGHT 45 180  
ITALIC 0 10

**Ratatam** AA WEIGHT 15 120

**Dueblo** AA WEIGHT 0 100  
SERIF 0 100  
SEMI off on

**NØMAD** NN WEIGHT 50 200  
WIDTH -90 90

**Berto** AA WEIGHT 29 120

*f* *ll* width 0 10.0

In the menus of your application you can control variability and regulate for example the weight or italic angle of a font.

To install font software especially for the use in Adobe applications and to be able to use the variable font settings there, open the folder Macintosh HD/Library/Application Support/Adobe/Fonts and copie & paste or move the font software (GX.ttf files) into this folder. The fonts are then available in your Font selection menus. Proceed similar on other computer systems.





# Character Sets

## CHARACTER SETS: LATIN & LATIN EXTENDED (VARYING SETS)

---

LIGATURES (EXTENDED) ff fi ffi fl ffl fu fi ct st etc.  
SMALLCAPS ABCDEFGHIJKLMNOPQRSTUVWXYZB  
FIGURES OLD STYLE & SMALL CAPS 0123456789/0123456789  
FIGURES TABULAR (FITTING IN TABLES) 0123456789  
(MORE ACCENTS AVAILABLE: COMBS, STD, CASE · / · \ · ^ · v · u · o · ~ · " · ˆ ˜ ˘ ˙ ˚ ˛ ˜ ˝ etc.)  
s c

---

## CHARACTER SETS: KYRILLIC, KYRILLIC EXTENDED & GREEK

---

### CYRILLIC BASIS

АБВГДЕЁЖЗИЙКЛМНОПРСТУФХЦШЩЬЫ  
ЭЮЯабвгдеёжзийклмнопрстуфхцшщъьыэюя

---

### CYRILLIC EXTENDED (+)

Ґ ґ Ё ё Ќ ќ Ў ў Ц ц Ў ъ S s I i J j Ѓ ґ Ж ж Х х Ч ч Ї ї А а Ä ä Æ æ  
Ж ж Ѕ ѕ Й й Ö ö У у Ў ў Ч ч Ѕ ѕ Л л W w Ø ø V v F f Ж ж К к Н н У у Ё ё  
ґ ґ ё ё к к ў ў ц ц ъ ъ s s i i j j ґ ґ ж ж х х ч ч h ж а ä æ  
ё ж з й й ö ö у у ў ў ч ч Ѕ ѕ л л w w ø ø v v f f ж ж к к н н у у l л ø ø

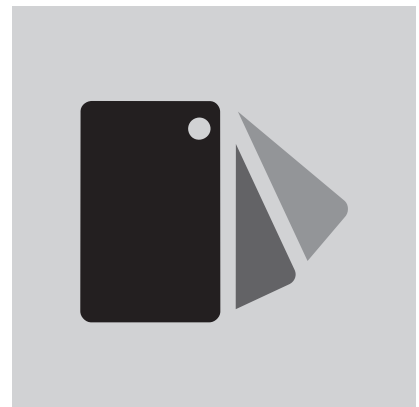
---

### GREEK BASIS

АБВГДЕЁЖЗИЙКЛМНОПРСТУФХЦШЩЬЫ  
ЭЮЯабвгдеёжзийклмнопрстуфхцшщъьыэюя

# Desktop Font Installation

Please note, that this manual is for users of actual computer systems and apps. If you use older systems or software, you may eventually need additional software to install and use the fonts. alphabeet.at recommends the OpenType font format: The advantages of OpenType are the ensuring of the compability between Mac and Windows as well as the embedding of more than 65.000 Glyphs and loads of automated and optional features.



## INSTALL FONTS

### 1. Localize and unzip the Font-File

The font software delivered by *alphabeet.at* comes in zip-packages. You have to unzip the files to get able to install and use it. Therefore open (by double click) the .zip-files you got and if asked confirm again to extract all files. If you have problems opening the .zip-file, please search for (free) Utilities to unpack such files.

### 2. Install the font software

Most common is just opening (double clicking) the font software (.otf or .ttf files) to install it into the systems font manager / library. Otherwise open any preinstalled application (on a Mac that's "Font Book" / "Schriftsammlung", under windows go to "Fonts" in the system control panel menu) or any other font manager you are using. You find these applications in the applications folder on your system.

Add the new fonts to your font manager and font collection by open and install it into such a program or copie and paste the files into corresponding folders. Either there is a plus-button in the app, or you go to "add font" in the menus of the app. It may pop up another dialog, just follow the instructions to open and install the fonts.

*The chosen Font is now available in all text processing applications on your computer.*

### 3. Install Fonts especially for Adobe Software

To install font software especially for the use in Adobe applications and to be able to use the variable font settings there, open the folder

Macintosh HD/Library/

Application Support/Adobe/Fonts

and copie & paste or move the font software (.otf or .ttf files) into this folder. The fonts are then available in your Font selection menus. Proceed similar on other computer systems.

It's on you how you choose to manage the software for font management. As written in the Licence agreement you are responsible for securing the software and making sure that unlicensed copies do not leave your possession.

*Please ensure that the usage follows all terms and conditions written in the end user licence agreement.*

*Thank you for using our fonts and font software and enjoy the work with it.*

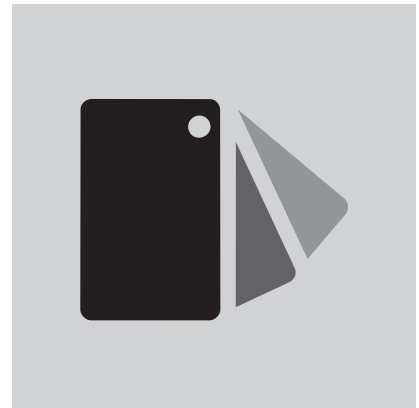
© 2020 **alphabeet.at**

Schriftstudio / Font Shop

**www.alphabeet.at**

# Web Font Installation Embedding Fonts

Adding a unique font to your website or web application is a great way to let it become special and allows to follow predefined corporate design rules. The @font-face CSS rule explained below is the most common approach for adding custom fonts to a website.



## INSTALL FONTS ON SERVERS:

### 1. Localize and unzip the Font-File

You may install the font software on a web server together with a website in order to enable web browsers to render the typesetting in webdesign, for example by using the css-rule @font-face. Please apply reasonable state-of-the-art measures to ensure, that third parties and other websites cannot access the font software for displaying.

### 2. Using Web font software

The @font-face rule allows custom fonts to be loaded on a webpage. Once added to a stylesheet, the rule instructs the browser to download the font from where it is hosted, then display it as specified in the CSS. This is the method with the deepest support possible right now. The @font-face rule should be added to the stylesheet before any styles.

Please ensure that the usage follows all terms and conditions written in the end user licence agreement.

Thank you for using our fonts and font software and enjoy the work with it.

© 2020 alphabeet.at

Schriftstudio / Font Shop  
[www.alphabeet.at](http://www.alphabeet.at)

```
@font-face {  
  font-family: 'WebFont';  
  src: url("https://website.com/css/fonts/WebFont.woff2") format('woff2'), /* Super Modern Browsers */  
       url("https://website.com/css/fonts/WebFont.woff") format('woff'), /* Pretty Modern Browsers */  
       url("https://website.com/css/fonts/WebFont.ttf") format('truetype'), /* Safari, Android, iOS */  
       url("https://website.com/css/fonts/WebFont.eot?#iefix") format('embedded-opentype'), /* IE6-IE8 */  
  src: url("https://website.com/css/fonts/WebFont.eot"); /* IE9 Compat Modes */  
}
```

Then use it to style elements like this:

```
body {  
  font-family: 'WebFont', Fallback, sans-serif;  
}
```

Please search the web for more informations about web fonts.